

## IXIZSTRUCTIONS



### CONTACT

Email: [ixizconcept@gmail.com](mailto:ixizconcept@gmail.com)  
www: <http://www.ixizconcept.com>

Tel: 678.871.8861 Fax: 206.202.0847

### Subaru Imprezza - Hood Lift

#### Features:



- Installs in less than 10 minutes with basic tools.
- Increases the work area under the hood and remove the stock post impediment
- **No drilling nor rivetting.**
- Hardware are all anodized Alum. and Zinc Plated and/or **stainless steel.**
- Secure custom CNC brackets will not shift during usage.
- Opening motion is smooth, effortless and precise.
- Design for stock or carbon hoods

### PACKING LIST

Assembled Hood Damper (2 sides per vehicle) = Upper-Bracket w/ swivel and lower swivel hardware  
2 additional stainless steel screws (provided with longer threads)  
Verify all components are present



Hardware included are all stainless and brackets are aluminum

**Tools Required**

- *Hex Wrench (allen wrench)*
- *3/8" wrench*
- *Socket and socket driver – Remove of fender and hinge bolts*
- *Bolt fastener [Loctite] (optional)*

**Install Lower Swivel**

**Install lower swivel to fender**

1. Remove fender bolt and apply some grease on the exposed fender marking. (when bolt is removed that area under the bolt has no paint – applying grease will prevent corrosion)
2. Select the correct side of ixizhood lift (Driver side is clearly marked) & [Passenger side has company identification]
3. Remove the protective cap and carefully thread the lower swivel onto the fender and tighten with wrench



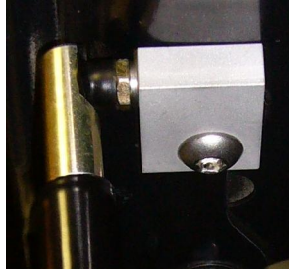
(picture above shows the standard swivel with smaller washer)

4. Repeat for the other side, while the hood is still held up by OEM prop/rod
5. Leave the **upper ixizhood brackets** un attached

**The lower swivels are now complete**

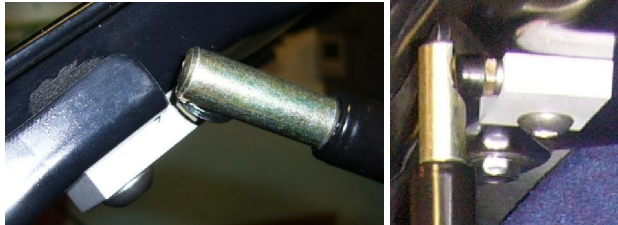
### Install Upper Bracket

1. Loosen and remove only the upper hinge bolt. Apply some grease to the exposed/unpainted area for rust prevention.
2. With assistance remove the hood prop and raise the hood till the ixizhood bracket matches the hinge and fasten with the bolt provided (longer). Thread locker/Loctite is optional.



Additional assistance may be required – The design of the ixizhood increases the work area under the hood by opening the hood further for better access. Assistance is required to hold the hood in place while installing the upper bracket/strut onto the Hinge

3. Before fastening the upper bracket bolt onto hinge, verify the clearance between the upper swivel and the hinge. Some vehicles may require slight adjustments. The first compression of the strut is highly recommended to be completed with care and should be done slowly to lubricate the internals.



4. Once you verify the clearance – Tighten the hinge bolt
5. Repeat the same for the other side

**The upper bracket assembly is now complete**

### IXIZHOOD INITIAL CLOSING AND SETTING

#### First time usage

1. Make sure all tools are removed from engine bay
2. Check all brackets are mounted securely and verify the position (see pictures above).
3. Check all hardware are mounted securely
4. CLOSE the Hood slowly to lubricate the internals of the damper and reopen the hood slowly.

**YOUR IXIZHOOD IS NOW FULLY ASSEMBLED**

Please post a review at your favorite forums. Ixizconcept does not advertise and depends on its supporters for promotion. The best way to thank us is to write a review of your experience and quality of service.

**Thank you**